



SCW

SECURITY CAMERA WAREHOUSE

Technical Guide Hard Drive Installation

CAUTION Make sure device is completely powered off and unplugged before opening unit. Be sure to ground yourself and any tools before proceeding. Damage caused by improper installation will not be covered under warranty.

Note: We strongly recommend surveillance rated drives.

Step 1.

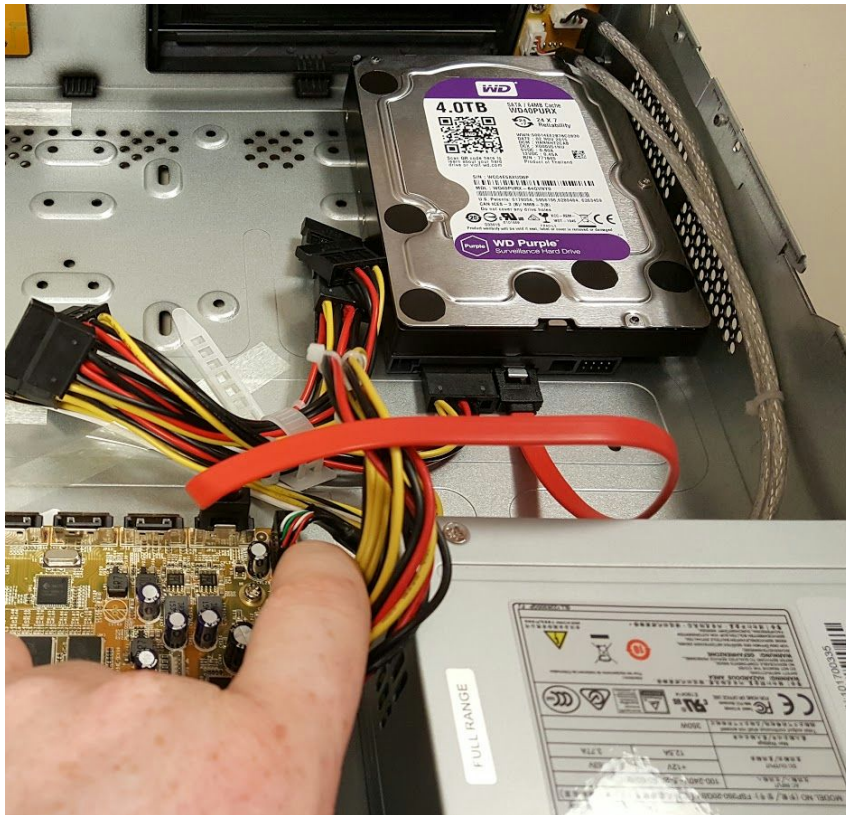
Remove cover screws and slide top cover off the recorder.





Step two.

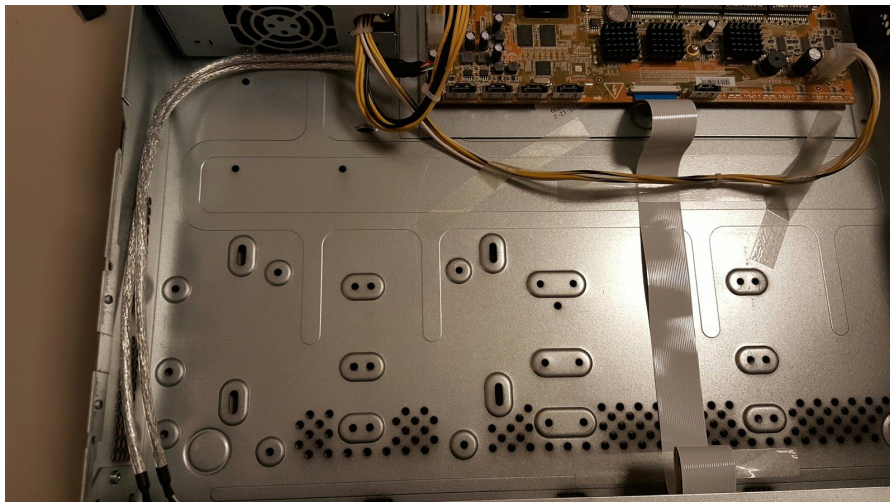
Connect both Sata and power cables to the hard drive and motherboard.





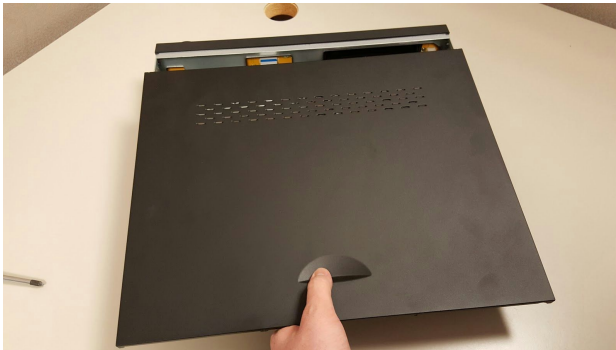
Step 3.

Locate mounting points on the recorder and align hard drives mounting point.
Use 4 hard drives fasteners to attach hard drive.



Step 4.

Reinstall top cover on recorder.



Step 5.

Power up the recorder and Login to the main menu. Select the HDD icon, check mark the drives and click initialize at the bottom of the screen.

Please let us know if you have any questions during installation.